



**Dan Weinberger**  
Director, System Design

dweinberger@VeriCorMed.com  
www.VeriCorMed.com  
Mobile: 608.792.1033

703 Western Ave.  
Holmen, WI 54636  
Office: 866.469.6019

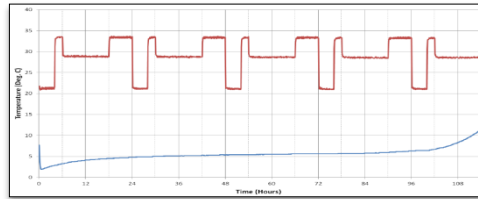


(608) 526-6901 | VeriCorMed.com | info@vericor-med.com

# Cool Cube™ PCM Coolers



Save Time



Protect Product



Save Money

**Varicella  
MMRV/Zoster  
FFP**

@ Lab Freezer  
Temperatures

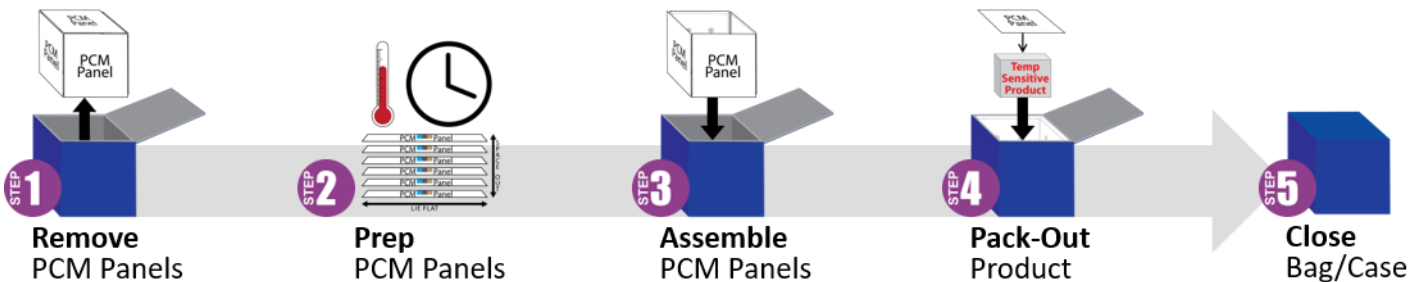
**Vaccine  
Medicine  
Blood Products**

@ Refrigerator  
Temperatures

**Platelets  
FFPE  
Biospecimens**

@ Room  
Temperatures

## Safe, easy container & pack-out systems for temperature sensitive product.



# Why a Cool Cube™?

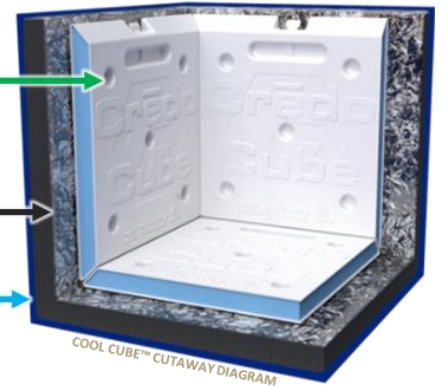
## To protect product.

- ✓ **SAFE.** Lab validated, qualified pack-out systems use flat, PCM panels instead of bulky, inconsistent, unsafe ice/gel packs or condensers with moving parts.
- ✓ **CONSISTENT.** Patented, beveled-edge PCM panels form a chamber to surround the product and create a stable temperature throughout.
- ✓ **LONG-LASTING.** Temp-Shield™ Insulation (vacuum insulated panels) efficiently minimizes the effect ambient temperatures have on the internal cooler temperature.

Temperature  
Regulating  
Panels

Insulation

Bag/Case



## To save time.

- ✓ **SIMPLE.** Patented PCM system shortens the pack-out process and reduces time spent on training & SOP procedures.
- ✓ **EFFICIENT.** Pockets, wheels, handles, and straps enable users to easily manage products in a safe, effective way.
- ✓ **QUALIFIED.** Lab verified system eliminates the need for lengthy validation processes.

## To save money.

- ✓ **MULTI-PURPOSE.** Use for off-site transport, remote locations, & on-site emergency backup during power outages.
- ✓ **REDUCE.** Reusable components eliminate purchasing of supplemental supplies (ice/gel packs, buffering material).
- ✓ **DURABLE.** Patented components (reinforced VIPs & specially-coated PCM panels) ensure a long-life span to decrease operational costs for years to come.



|                       | Size<br>Exterior Dims<br>Tare Weight      | 03<br>11"x11"x11"<br>≈ 11 lbs.       | 08<br>16"x11.5"x11.5"<br>≈ 16 lbs.   | 28<br>20½"x20½"x23"<br>≈ 62 lbs.      | 96<br>26½"x26½"x28¼"<br>≈ 112 lbs.     |
|-----------------------|---|--------------------------------------|--------------------------------------|---------------------------------------|--|
| <i>Examples</i>       | <b>Type</b>                               | <b>Model/Hold Time</b>               | <b>Model/Hold Time</b>               | <b>Model/Hold Time</b>                | <b>Model/Hold Time</b>                 |
| Vaccine<br>Medicine   | <b>Refrigerator</b><br>2° to 8°C          | <b>VT-03</b><br>>65 hrs.             | <b>VT-08</b><br>>76 hrs.             | <b>VT-28</b><br>>103 hrs.             | <b>VT-96</b><br>>126 hrs.              |
| Blood<br>Products     | <b>Fridge</b><br>1° to 10°C<br>1° to 6°C  | <b>BT-03</b><br>>70 hrs.<br>>39 hrs. | <b>BT-08</b><br>>83 hrs.<br>>53 hrs. | <b>BT-28</b><br>>108 hrs.<br>>68 hrs. | <b>BT-96</b><br>>128 hrs.<br>>112 hrs. |
| VAR/FFP<br>MMRV/LZV   | <b>Lab Freezer</b><br>-50° to -15°C       | <b>FT-03</b><br>>62 hrs.             | <b>FT-08</b><br>>60 hrs.             | <b>FT-28</b><br>>94 hrs.              | <b>FT-96</b><br>>139 hrs.              |
| FFPE/Bio<br>Platelets | <b>Room</b><br>15° to 25°C<br>20° to 24°C | <b>RT-03</b><br>>91 hrs.<br>>47 hrs. | <b>RT-08</b><br>>83 hrs.<br>>66 hrs. | <b>RT-28</b><br>>141 hrs.<br>>85 hrs. | <b>RT-96</b><br>>143 hrs.<br>>91 hrs.  |

Hours indicate how long internal temps were within range during summer profile tests (cycling between 22°C/72°F and 35°C/95°F). Technical documents available upon request.

[VeriCorMed.com/CoolCubes](https://VeriCorMed.com/CoolCubes)

(Prices, Spec Sheets, Features, Pictures, Videos, Testimonials, User Guides, FAQs)