

Cool Cube™ **Inspection** Checklist



Cool Cube™ **Maintenance** Checklist

Ensure the effectiveness of the Cool Cube™ in transporting temperature-sensitive materials.

Maintain the longevity and performance of the Cool Cube™.

After each use:

- Visually check for rips, tears, punctures, or other damage.
- Inspect zippers, straps, handles, and wheels (if applicable) for functionality and wear.
- Check for excessive dirt or staining.

Outer Shell (Hard & Soft Cases)



As needed:

- Wipe down with a damp cloth using warm water.
 - For stubborn stains, use a mild detergent.
 - Rinse thoroughly with clean water.
 - Allow to air dry completely before storing or reusing.

Before each use:

- Visually check each panel for leaks, cracks, or punctures.
 - Refrigerator temp PCM panels, with blue labels/tabs, are oil-based and will not evaporate.
 - Lab freezer temp PCM panels, with grey labels/tabs, are salt-based and will dry into a white crust.
 - ❖ PCM in a solid phase (cool) will not leak until it changes into a liquid phase (warm).
- Inspect for excessive dirt or contamination.

Temperature Controlling System (removable PCM Panels)



PCM - Phase Change Material



As needed:

- Wipe down with a damp cloth using warm water.
 - For sanitization, use a 70/30 isopropyl alcohol and water mixture or other salt-based disinfectants.
 - Rinse thoroughly with clean water.
 - Allow to air dry completely before storing or reusing.
- ❖ DO NOT use autoclaves, expose to extreme heat (above 75°C/167°F), use abrasive cleaners, or use acetone (or other similar solvents)!

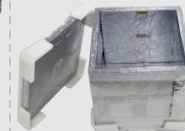
Before each use (especially after the first 5 years):

- Check the polycarbonate encapsulation for cracks or breaks.
 - Damage to this clear plastic does not necessarily mean the VIP is compromised if the panel is vacuum sealed.
- Visual Check: Inspect the skin of each panel (white or silver) for a tight, rippled, textured surface. A loose or wavy appearance indicates a potential vacuum loss.
- Touch Test: Press on each panel. A sealed panel will feel rigid and stiff. A compromised panel will feel soft and squishy.

Insulation (VIP System)



VIP - Vacuum Insulated Panel



As needed:

- Handle with care!
 - The VIP System is sensitive to physical damage.
- Wipe down with a damp cloth using warm water.
 - For sanitization, use a 70/30 isopropyl alcohol and water mixture or other salt-based disinfectants.
 - Allow to air dry completely before storing or reusing.
- ❖ DO NOT store the VIP closed with moisture or cold PCM panels inside! Let the inside dry thoroughly before storing.

Testing:

- With a calibrated data logger, monitor the cooler's ability to maintain the required temperature for the specified duration.
 - Check VIP panels to ensure integrity if temperature monitoring shows deviation from past performance.
- Start with solid PCM panels for the longest hold duration.

Overall System



As needed:

- Replace any VIP panel suspected of being compromised as soon as possible to maintain the cooler's performance.
- Tape any cracks or damage to the polycarbonate encapsulation; it is merely for protection and aesthetics.
- ❖ Purchase replacement parts @ VeriCorMed.com.

This checklist guides you. Always refer to the Cool Cube™ product manual for specific instructions and recommendations. Call 608-526-6901 or visit VeriCorMed.com if you have questions.